

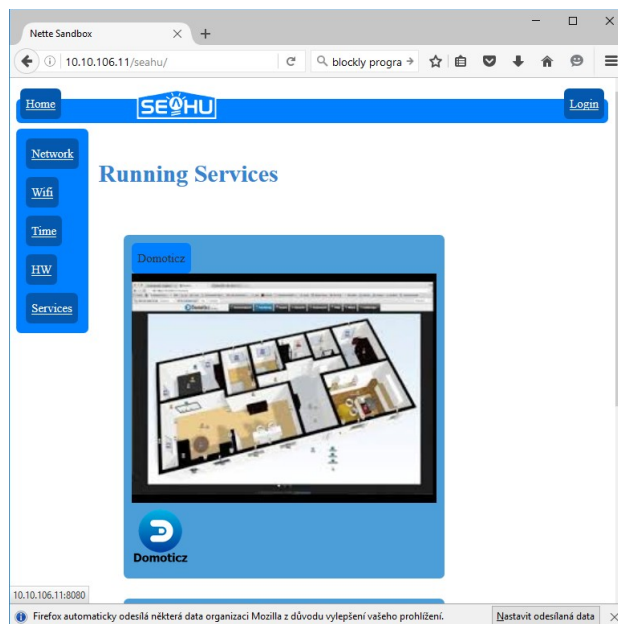


Domoticz Basic setting with home control module SEAHU SH017



1. Access into service DOMOTICZ

Open web page with IP address your module (IP address your module you can find from LCD menu). In home page is list running services. If this list contain service domoticz, click



on his illustration image for redirect domoticz web page. If service domoticz is not in list services, than log in and in menu service start service domoticz.

2. Menu description

Dashboard – Domoticz home page, view favourite items actually empty.

Switches – list of switches

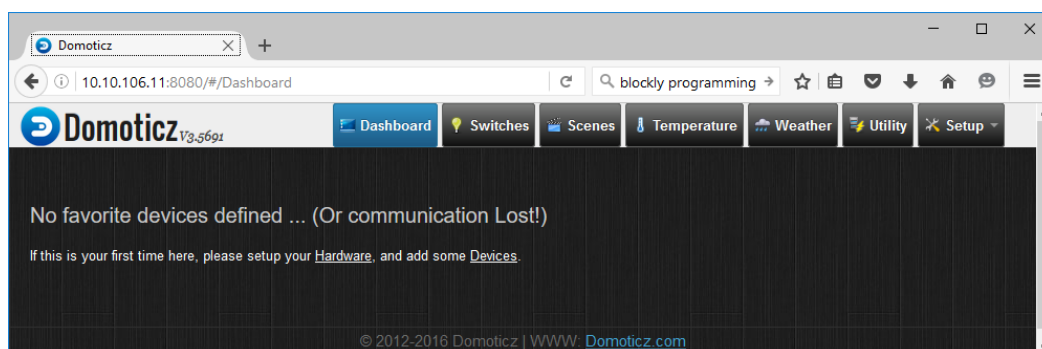
Scenes – list groups (of switch) and scenes (preparation setting switches – some ON and some OFF)

Temperature – list available temperatures

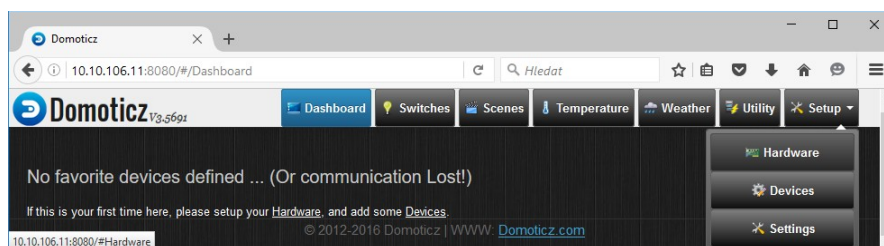
Weather – list available meteo point

Utility – list thermostats

Setup – follow below

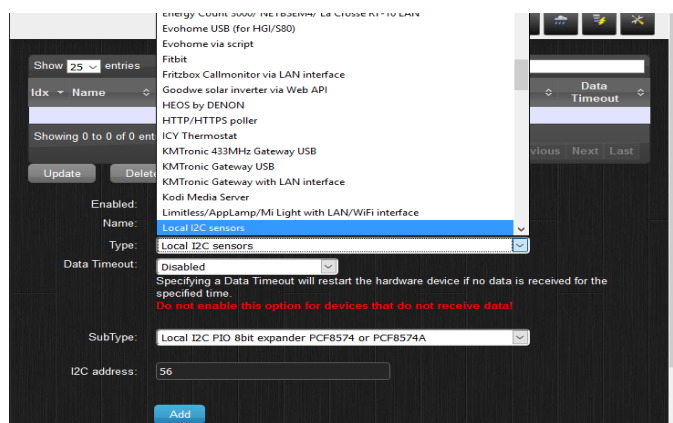


3. Hardware setting (menu SETUP → Hardware)



Hear add support various hardware:

Can be real device e.t. smart TV, or bus with can have connect many sensor, or virtual device who real does not exist. Some type of hardware can be use more times. For orientation is useful have own name for every added hardware.



Domoticz don't have direct support for Seahu SH017, but support chip used in this module. Used chips is PCF8574. First of chips is use in base board (with I2C address 56) and second on LCD board (with I2C address 60). You can add those chips by select type “Local I2C sensors”, next select subType “Local I2C PIO 8bit expander PCF8574 or PCF8574A” and insert I2C address. After add those hardware in menu “SETUP → Devices” will be created 16x switch. Will be suitable rename those switches by his purpose (see hardware specification). For easy start you can download prepared start backup setting from address: http://IP_your_modul/help/domoticz/domoticz.db and restore this backup. Restore you can fin on menu “SETING → Setting → panel: Backup/Restore → button: Restore Database”. Click on “browse” and list download file “domoticz.db” and Upload. After this your setting may look this:

Idx	Name	Enabled	Type	Address	Port	Data Timeout
3	Display board	Yes	Local I2C PIO 8bit expander PCF8574 or PCF8574A		I2C-60	Disabled
2	Base board	Yes	Local I2C PIO 8bit expander PCF8574 or PCF8574A		I2C-56	Disabled

Seznam hardwaru po nahrání počátečního stavu

Idx	Hardware	ID	Unit	Name	Type	SubType	Data	Last Seen
1	Base board	0007800	128	relay1	Lighting 2	AC	Off	2016-12-03 14:09:22
2	Base board	0007801	129	relay2	Lighting 2	AC	Off	2016-12-03 14:09:25
3	Base board	0007802	130	relay3	Lighting 2	AC	Off	2016-12-03 14:09:28
4	Base board	0007803	131	relay4	Lighting 2	AC	Off	2016-11-30 23:18:16
5	Base board	0007804	132	input1	Lighting 2	AC	Off	2016-11-30 23:08:22
6	Base board	0007805	133	input2	Lighting 2	AC	Off	2016-11-30 23:09:42
7	Base board	0007806	134	output1	Lighting 2	AC	Off	2016-11-30 23:07:56
8	Base board	0007807	135	output2	Lighting 2	AC	Off	2016-11-30 23:07:56
9	Display board	0007C00	192	key-left	Lighting 2	AC	Off	2016-12-03 14:18:32
10	Display board	0007C01	193	key-right	Lighting 2	AC	Off	2016-12-03 14:18:32
11	Display board	0007C02	194	key-up	Lighting 2	AC	Off	2016-12-03 14:18:32
12	Display board	0007C03	195	key-down	Lighting 2	AC	Off	2016-12-03 14:18:32
13	Display board	0007C04	196	key-ok	Lighting 2	AC	Off	2016-12-03 14:18:32
14	Display board	0007C05	197	key-esc	Lighting 2	AC	Off	2016-12-03 14:18:32
15	Display board	0007C06	198	lcd-backlight	Lighting 2	AC	Off	2016-12-03 14:18:56
16	Display board	0007C07	199	beep	Lighting 2	AC	Off	2016-12-03 22:10:58

Seznam zařízení (devices) s jejich popisky po načtení počátečního stavu

If you use 1-wire sensors, then add „1-Wire (system)“. If you use any other sensors try find your Type. (Domoticz support many types wire or wireless sensors, meteostations, remote controls, ...)

Hardware configuration form showing:

- Enabled: ☒
- Name:
- Type: 1-Wire (System)
- Data Timeout: Disabled

Very useful is add “Dummy (Does nothing, use for virtual switches only)”. This hardware seem as no unusable, but is useful in evaluated events or testing purpose.

Hardware configuration form showing:

- Enabled: ☒
- Name:
- Type: Dummy (Does nothing, use for virtual switches only)
- Data Timeout: Disabled

In my case I add 2x”Local I2C PIO 8bit expander PCF8574 or PCF8574A “, “1-Wire (System)” a “Dummy (Does nothing, use for virtual switches only)” and rename “Display board“, “Base board“, “1-wire“, “dummy“. List my Hardware table:

Idx	Name	Enabled	Type	Address	Port	Data Timeout
5	Dummy	Yes	Dummy (Does nothing, use for virtual switches only)			Disabled
4	1-wire	Yes	1-Wire (System)			Disabled
3	Display board	Yes	Local I2C PIO 8bit expander PCF8574 or PCF8574A		I2C-60	Disabled
2	Base board	Yes	Local I2C PIO 8bit expander PCF8574 or PCF8574A		I2C-56	Disabled

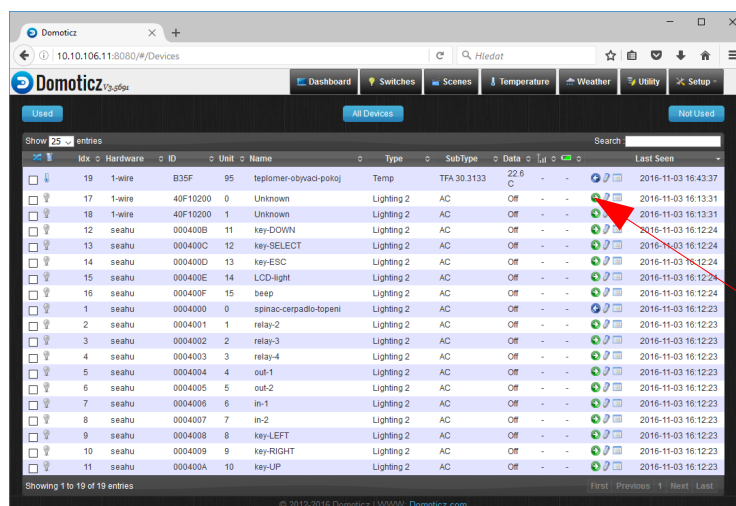
4. Rename and select device for use (menu SETUP → Devices)

Next step is select and human rename devices who we are plan use (etc. switch-heating-pump, temp-leaving-room,..). Some hardware contains many switches, . We will not necessarily use all.

After click on green arrow you may rename and add device for next use. This signalize blue arrow (blue arrow enabled device take off from use).

Added device can be visible in our categories in main menu (switch, temperature,...)

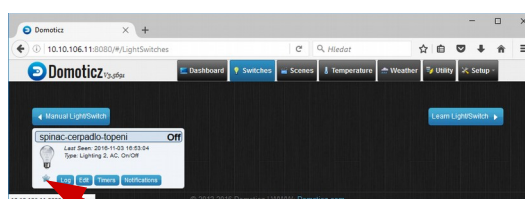
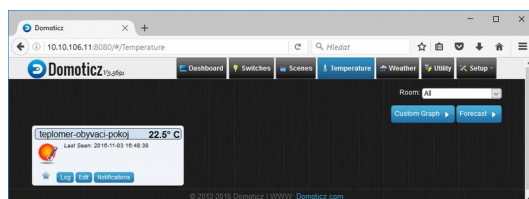
Example:



Click rename and add device for use

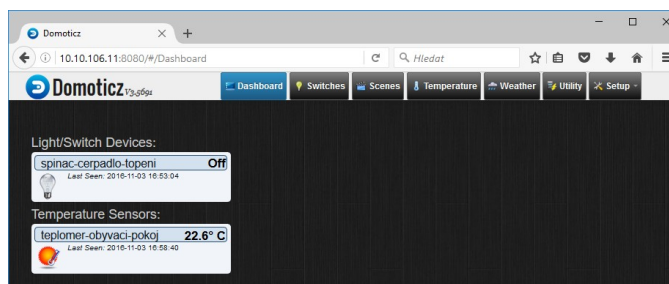
5. Favourite (menu Dashboard)

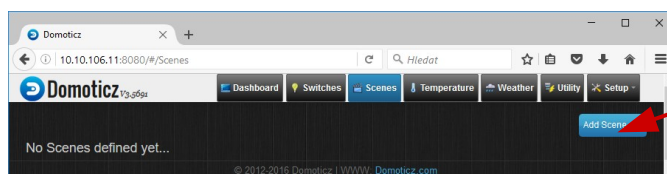
Individual components in yours categories can you marked as favourite. Easy click on start icon. Favourites will be displayed on Dashboard



favorite

Dashboard may be look:





6. Scenes and groups (menu Scenes)

With more switch you can create group. Group you can control by one button all ON or OFF. Otherwise scene is combination some switch can be set ON and some can be set OFF. One button can re-switches more switches.

EXAMPLE SET GROUP:

Rename switches in menu Setup → Devices relay-2 to relay-4 as light-1-living-room to light-1-living-room

Used

All Devices

Not Used

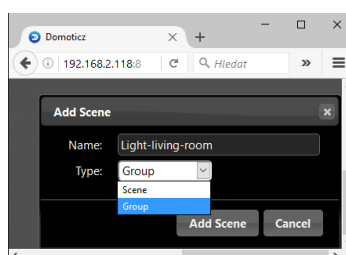
Show 25 entries

Search

	Idx	Hardware	ID	Unit	Name	Type	SubType	Data	Unit	Last Seen
	1	Base board	0007800	128	relay1	Lighting 2	AC	Off	-	2016-12-03 14:09:22
	2	Base board	0007801	129	light-1-living-room	Lighting 2	AC	Off	-	2016-12-03 14:09:25
	3	Base board	0007802	130	light-2-living-room	Lighting 2	AC	Off	-	2016-12-03 14:09:28
	4	Base board	0007803	131	light-3-living-room	Lighting 2	AC	Off	-	2016-11-30 23:18:16
	5	Base board	0007804	132	input1	Lighting 2	AC	Off	-	2016-11-30 23:08:22
	6	Base board	0007805	133	input2	Lighting 2	AC	Off	-	2016-11-30 23:09:42
	7	Base board	0007806	134	output1	Lighting 2	AC	Off	-	2016-11-30 23:07:56
	8	Base board	0007807	135	output2	Lighting 2	AC	Off	-	2016-11-30 23:07:56
	9	Display board	0007C00	192	key-left	Lighting 2	AC	Off	-	2016-12-03 14:18:32
	10	Display board	0007C01	193	key-right	Lighting 2	AC	Off	-	2016-12-03 14:18:32
	11	Display board	0007C02	194	key-up	Lighting 2	AC	Off	-	2016-12-03 14:18:32
	12	Display board	0007C03	195	key-down	Lighting 2	AC	Off	-	2016-12-04 01:03:24
	13	Display board	0007C04	196	key-ok	Lighting 2	AC	Off	-	2016-12-04 01:03:37
	14	Display board	0007C05	197	key-esc	Lighting 2	AC	Off	-	2016-12-03 14:18:32
	15	Display board	0007C06	198	lcd-backlight	Lighting 2	AC	Off	-	2016-12-03 14:18:56
	16	Display board	0007C07	199	beep	Lighting 2	AC	Off	-	2016-12-03 22:10:58
	17	1-wire	40F10200	0	Unknown	Lighting 2	AC	Off	-	2016-12-04 13:43:03
	18	1-wire	40F10200	1	Unknown	Lighting 2	AC	Off	-	2016-12-04 13:43:03
	19	1-wire	B35F	95	Unknown	Temp	TFA 30.3133	22.9 C	-	2016-12-04 13:45:13

And create group “Light-living-room” who contain switches from living room:

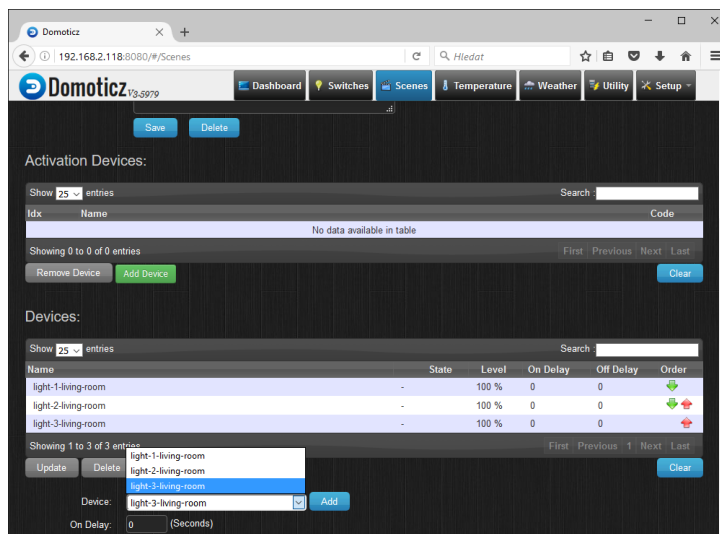
In menu “Scenes” click on button “Add scene” on dialog window rename e.t. to “Light-living-room”, select type “Group” and confirm “Add Scene”



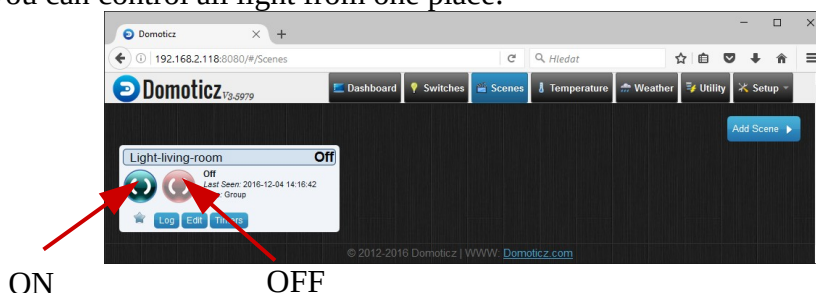
This is created group. Next click button “Edit” for edit members:



In editing group add all switch from living room by click drop-down menu “Device:” and select switch and confirm “Add”.



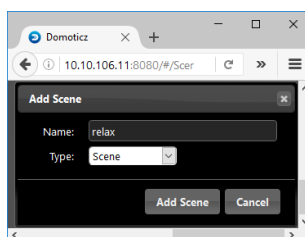
Now you can control all light from one place:



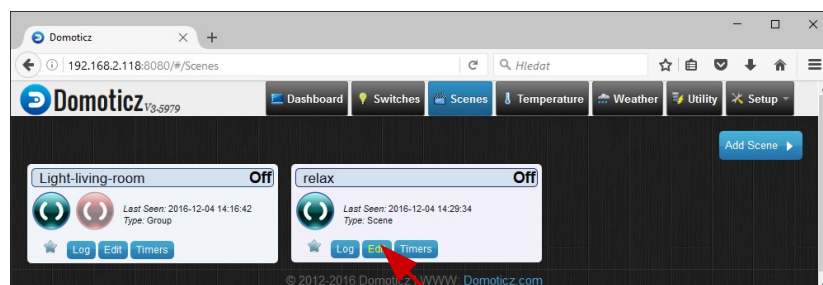
Example add scene:

I create scene with name “relax”. In this scene I ON only one light “light-3-living-room” other off.

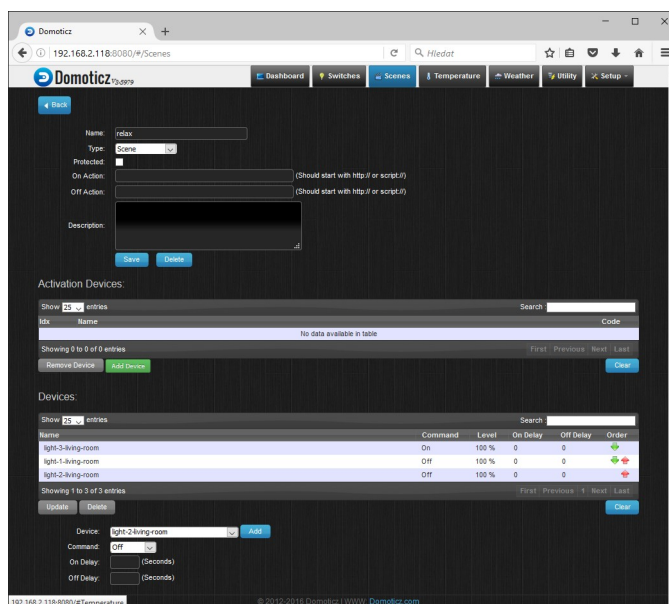
In menu “Scenes” click button „Add Scene“ write name and select type scene:



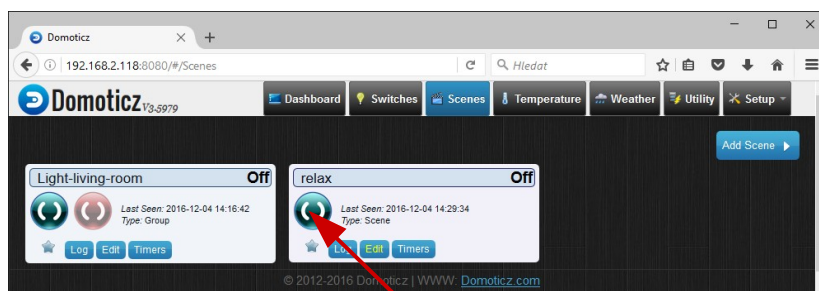
On crated scene click on button “Edit”:



into scene add switches with your pre-selection (on/off). This I do by click drop-down menu “Device:” select switch, next in box “command:” select on/off and confirm by button “Add”.

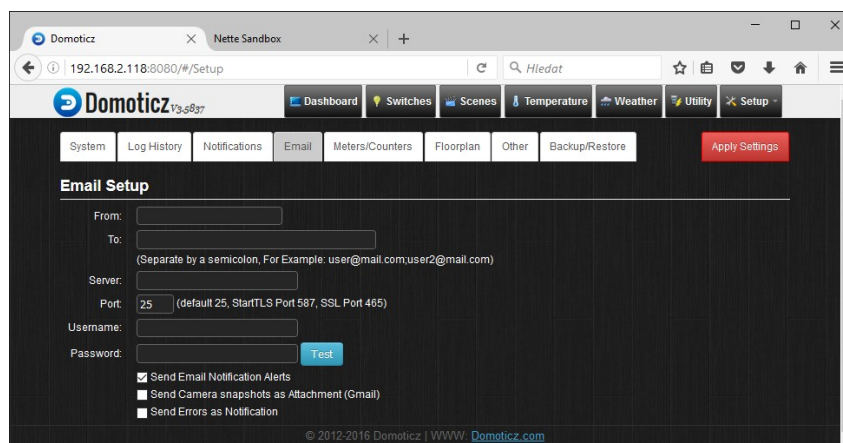


With Button „Back“ (left up) can go back to list groups and scenes. Once click can be scene activated.



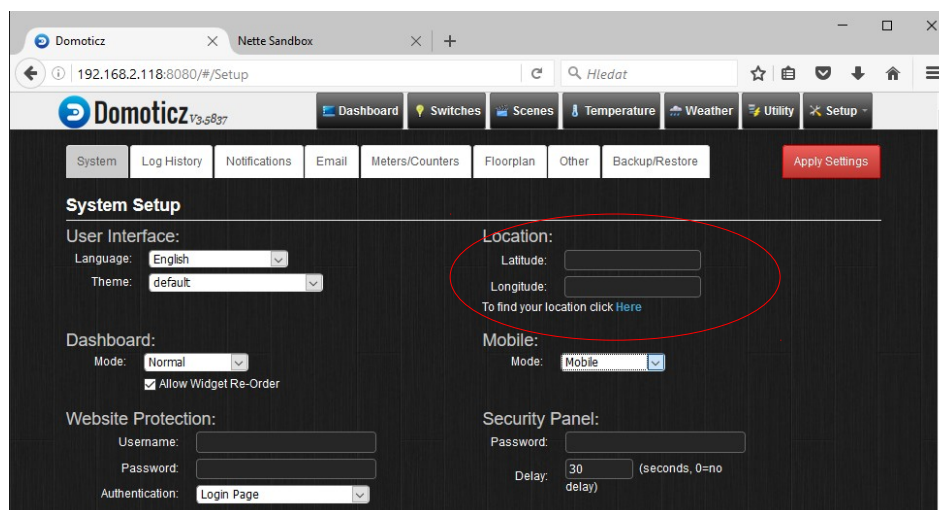
7. Setting E-mail (Menu Setup → Setting → Email)

In this manual is not use, but in future can be useful. System can send messages, for those reason must be set besides e-mail also access information for email server.



8. Setting Location (Menu Setup → Seting → System → kolonka Location)

Again in this manual not used, but in future can be useful. Mainly for timing by sunset or sunrise who is depend on date and location. Location can be set by GPS coordinates or find by name of city.



The screenshot shows the Domoticz web interface in a browser window. The URL is 192.168.2.118:8080/#/Setup. The 'Setup' menu is expanded, showing 'System', 'Log History', 'Notifications', 'Email', 'Meters/Counters', 'Floorplan', 'Other', and 'Backup/Restore'. The 'System' tab is selected, displaying the 'System Setup' page. The 'Location' section is circled in red and contains the following fields:

- Latitude:
- Longitude:
- To find your location click [Here](#)

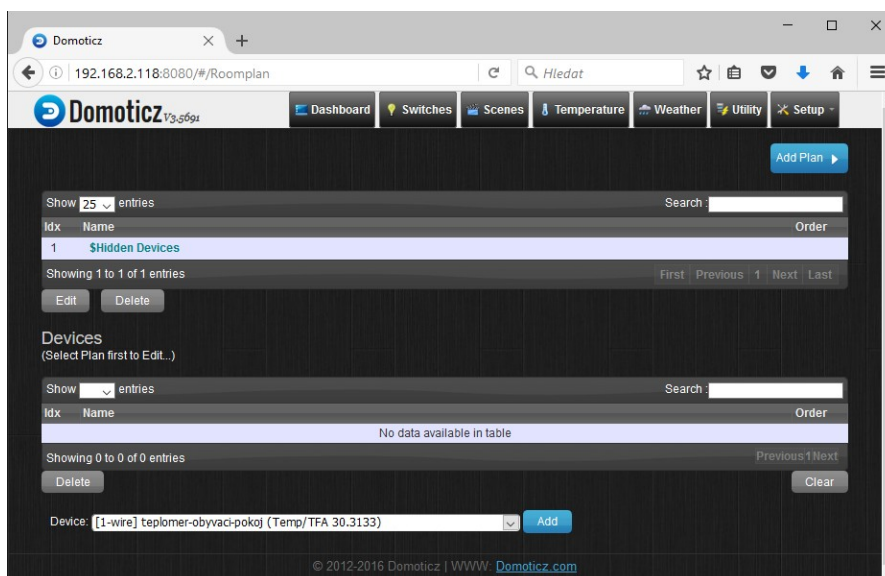
Other visible sections include:

- User Interface: Language (English), Theme (default)
- Dashboard: Mode (Normal), ☒ Allow Widget Re-Order
- Website Protection: Username, Password, Authentication (Login Page)
- Mobile: Mode (Mobile)
- Security Panel: Password, Delay (30 seconds, 0=no delay)

9. Division

If you have lot of devices is useful to somehow divide. In home automation is best divide on rooms and floors. This is a way who domoticz provide.

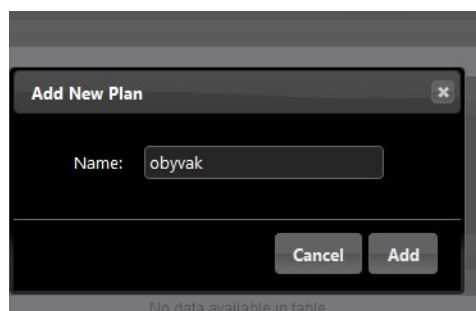
First we define rooms and assign sensors to them. Next step is define floor. For every floor may be set image and assign rooms, define area of rooms in image and locations sensors, switches,.. to image.



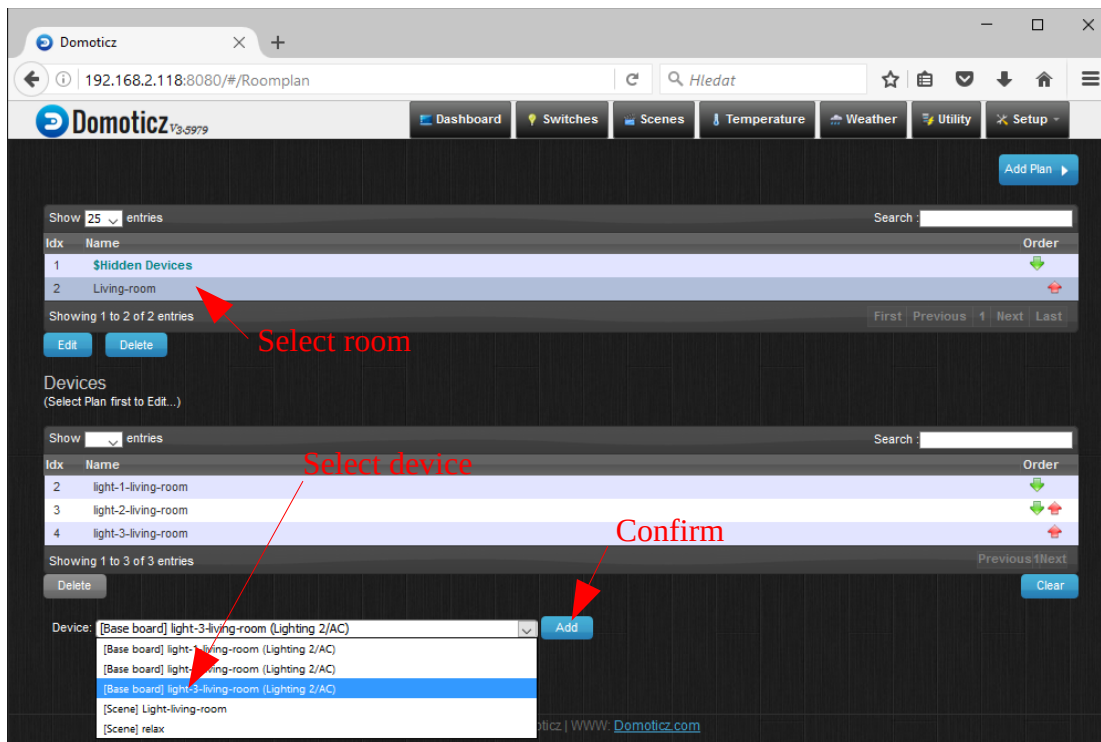
1. Definition of rooms

Setup → More Options → Plans → Roomplan

Click on “Add Plan” and write name and confirm by button “Add”.



Now select created room and step by step assign devices (switches, sensors, scenes, groups,..) for this room. Do this for all your rooms.
May be looks:



2. Definition of floors

Menu Setup → More Options → Plans → Floorplan

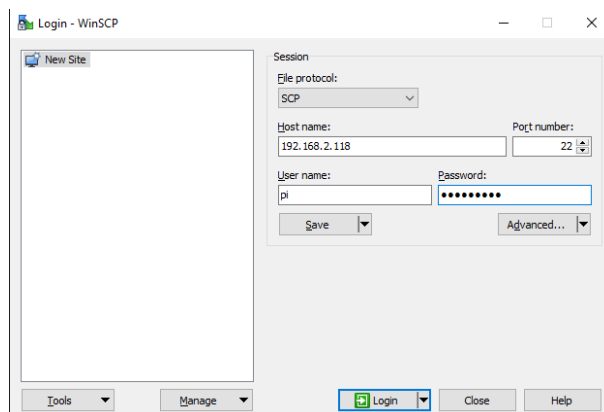
Here in up half screen you can add images for floors. Click on button “Add” name floor and select image for floor. You can select only pre loaded images. If you use own image, then you must first load this image. For load images must use external program on Windows my be use e.t. winscp, on Linux e.t. command scp. Below is example how to load own images from Windows.

Example howto load own images with winscp.

Program winscp find on your module at address:

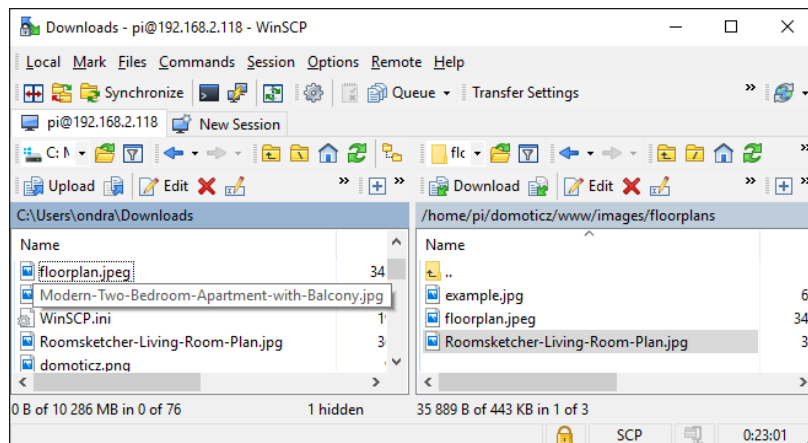
http://Ip_your_Module/help/utility/winscp576.exe or

<https://winscp.net/eng/download.php> . After run winscp program is necessary select File protocol: scp , and write IP address your module, User name: pi , password is (if you still



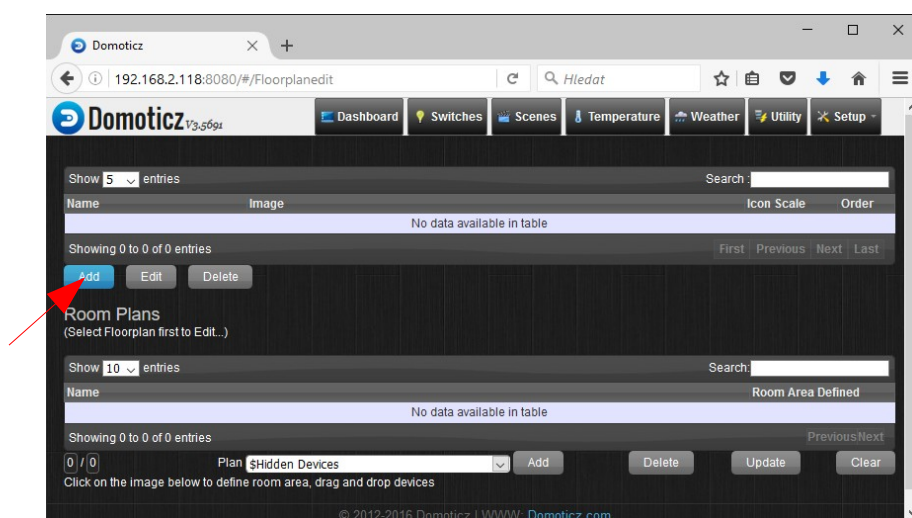
do not change): raspberry.

After login is open file manager. Left side is your disk and right side is raspberryPI disk. On raspberryPi browse to directory:
/home/pi/domoticz/www/images/floorplans and copy this own images.
Domoticz support images type: .jpg, png, bmp

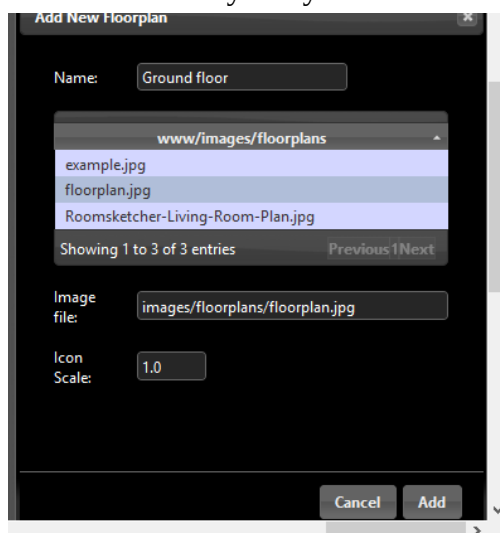


Create floor

Image you have copy. Les go back on web domoticz and select menu „Setup/More Options/Plans/Floorplan“



By button “Add” in up half of screen add floor with selected own image and your name of floor e.t. “Ground floor”. This way can you create other floors.



Click on row created floor with selected image. After few seconds in down half of screen will be display floor image.

Add room into floor

In drop-down menu "Plan:" select room (who you previously defined) and confirm by button "Add". Now room is part of selected floor.

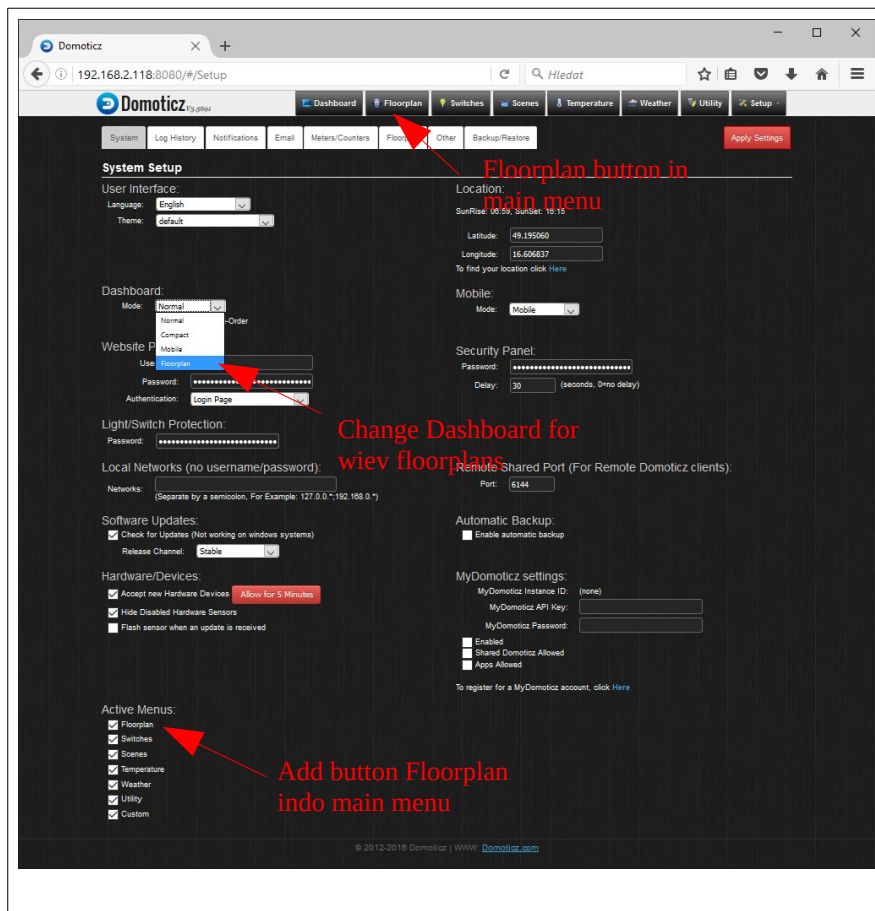
Click on rows with room in rooms table for define area this room on image (easy click on corners room in image) and locate devices from room to right place on image. Finish by button "Update". This way you can define all rooms with his devices on all floors.

The screenshot displays the Domoticz web interface for configuring floor plans. The interface is divided into several sections:

- Floors Table:** A table with columns 'Name', 'Image', 'Icon Scale', and 'Order'. It shows one entry: 'Ground floor' with the image 'images/floorplans/floorplan.jpg'. A red arrow points to this row with the text: "List of floors with his images, click rows to select floor".
- Room Plans Table:** A table with columns 'Name' and 'Room Area Defined'. It shows one entry: 'Living-room' with a green checkmark. A red arrow points to this row with the text: "List of rooms in selected floor".
- Room Plan Configuration:** Below the Room Plans table, there is a dropdown menu for 'Plan' (currently set to 'Hidden Devices') and an 'Add' button. A red arrow points to the 'Add' button with the text: "Add nex room into selected loor".
- 3D Floor Plan Visualization:** A 3D rendering of a floor plan. A red arrow points to a specific room (the living room) with the text: "Define area of selected room". Another red arrow points to a device (a lamp) on the floor plan with the text: "Locete devices selected room".

Add button Floorplan into main menu

Add button can you set in menu "Setup/Setting". In box "Active Menus:" you can check options "Floorlan". For quick view floors you can force floors into dashboard see. Next image.



10. More info

- on web project :
- on wikipedia:
- on youtube.com:
- options:

<http://www.domoticz.com/>

https://www.domoticz.com/wiki/Domoticz_Wiki_Manual

https://www.youtube.com/results?search_query=domoticz

<http://www.seahu.cz>

11. Writer

Ing. Ondřej Lyčka v December 2016

version document: 1.1